



VILLAGE MEETING

HVA Planning Group Updates

why: Action so far, feedback from developers, next steps.

MONDAY 8TH JANUARY 2024

7.30PM, THE CHURCH

Our Village Needs YOU!

Overview

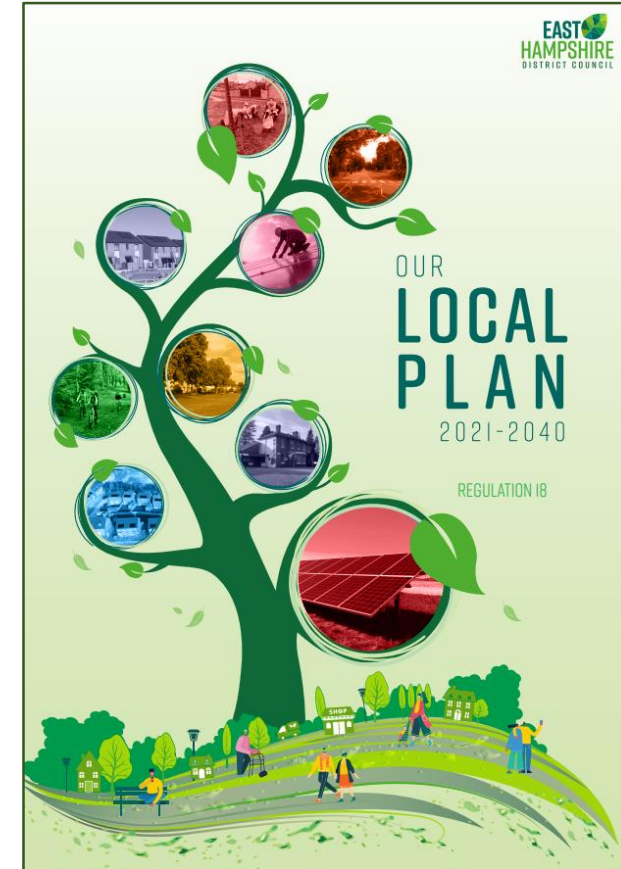
- EHDC Local Plan
- Alton Neighbourhood Plan
- Holybourne
 - What have we done so far
 - meeting with the developers
- What Action you can take

Purpose:

- Link people into information
- Feedback on Holybourne suggestions

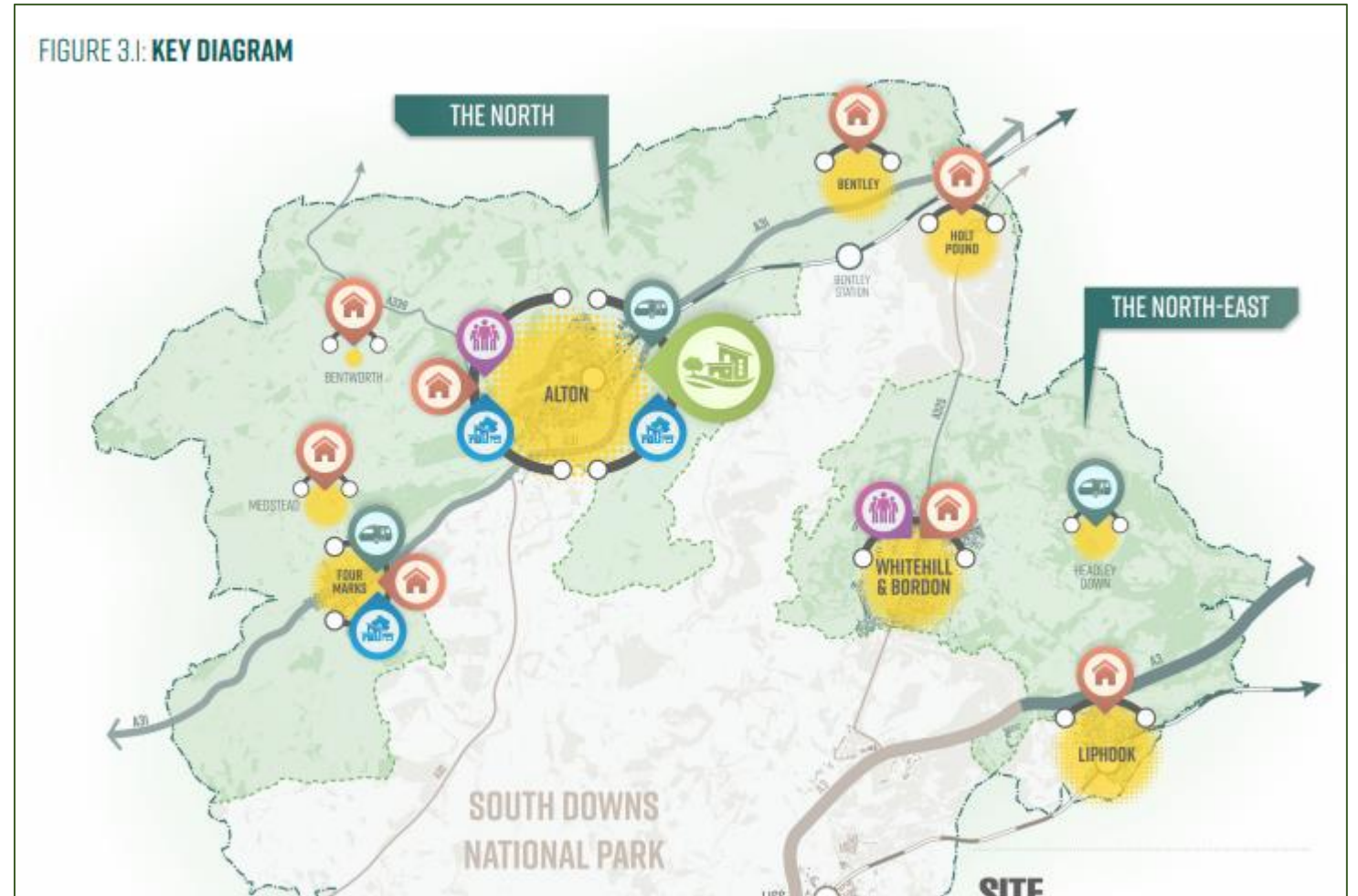
EHDC Local Plan

- the “spatial strategy to guide growth and development” across EHDC between 2021-2040
- A Local Plan assists EHDC in making planning decisions and resist appeals
- Draft Local Plan published in December 2023
- It “advocates where housing development is suitable”
- Will be discussed at EHDC Planning meeting on 10th January 2024
- **Proposed consultation period is 22nd Jan to 4th March 2024**



EHDC Draft Local Plan proposals

- 3,500 new houses in EHDC
 - 700 houses “in and around Alton”
- plus
- Neatham Farm development
 - Minimum 1,000 new houses
 - Supporting infrastructure (potentials primary school and “neighbourhood amenities”)



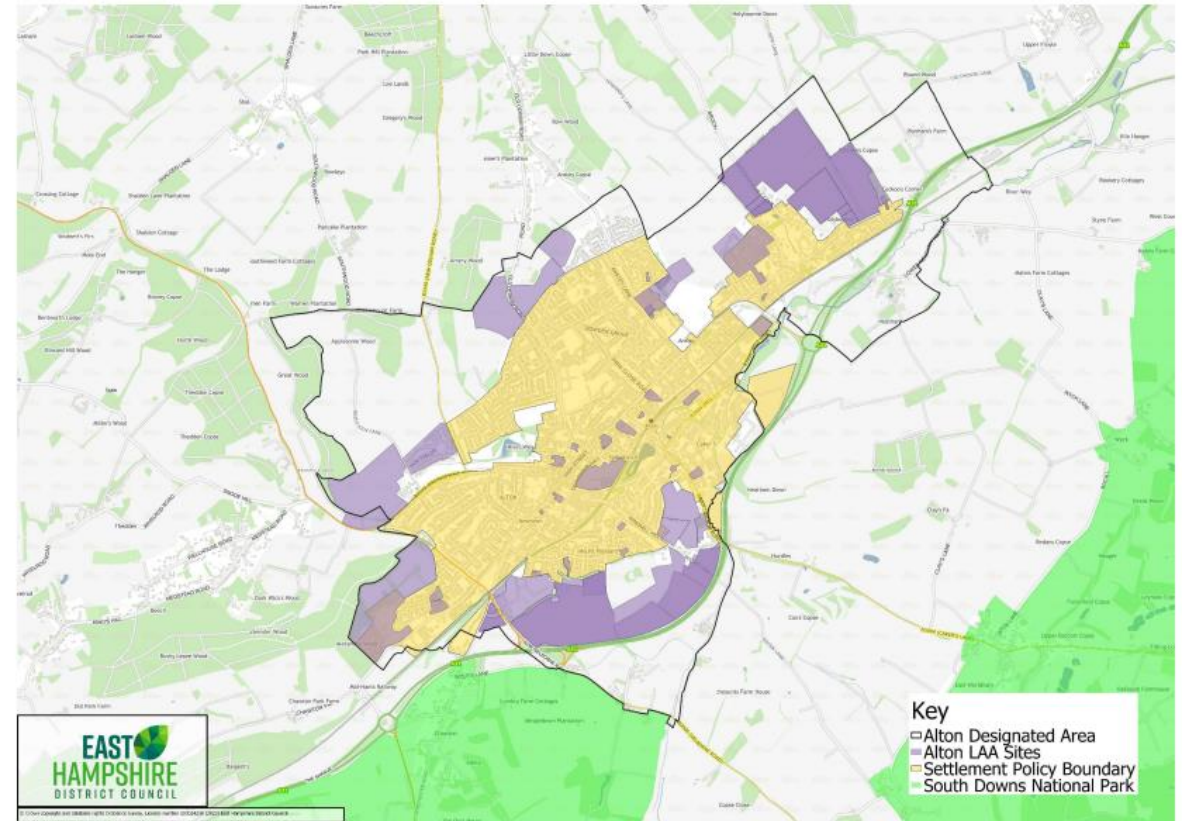
Alton Neighbourhood Plan

- Alton's chance to decide where the 700 houses go
- Consultations already happened
- More to come
- Ultimately approved through a public vote
- Holybourne has been seen to be vocal in consultations



EHDC “Land Availability Sites for Housing”

- Only “availability”
- ANP need to find space for 700 houses
- ANP considering a range of scenarios
- These choices will form the Alton Neighbourhood Plan
- Holybourne’s voice is loud



Alton Neighbourhood Plan timeframe:

- Consultation in April 2024, for 6 weeks
- Sign off by Alton Town Council

- Submission to EHDC – with another 6 weeks consultation
- Submission to the Government “Examiner”

- Public referendum (likely to be very late 2024, early 2025)

Important Dates for Action:

EHDC Local Plan

- Proposed consultation period is 22nd Jan to 4th March 2024

Alton Neighbourhood Plan

- Consultation – 6 weeks in April 2024
- Further EHDC-led consultation later in 2024
- Public referendum – late 2024 / early 2025

Important that Holybourne residents make their voices heard
HVA will publicise via Whatsapp and Facebook and Holybourne.com

Suggested responses:

EHDC Local Plan (22nd Jan to 4th March)

- Support for Neatham Down development
- Re 700 houses in Alton – raise concerns about pressures on traffic in the village

Alton Neighbourhood Plan (April 2024 plus more)

- Important to keep responding
- Issues: traffic chaos, access pinch point, impact on natural environment, impact on community, impact on ancient monuments, historic conservation area.
- Vote in referendum!!!

HVA will help you to do this

How to keep up to date:

- www.Holybourne.com
- Whatsapp Group
- Facebook

Action to date

- HVA meeting with chair of ANP (Spring 2023)
- Development Group formed (June 2023)
- Encouraged response to ANP consultation
- Questionnaire
- Developed strategic document (Aug 2023 – on website)
- Appeal for funds
- Appointed planning Consultant
- Met with CPRE
- Meeting with landowners

Housing in Holybourne

- The land-owners of the Froyle Estate have been looking at the field which contains the playground, and behind Streamacres.
- Suggesting 250 houses
- Single road exit onto London Road
- No planning application at the moment

Action:

- Tell us what you think
- Be ready to respond if a planning application is submitted

HVA will help you to do this



What do you think?

HVA Bank Details:

- Reference: Planning Donations
 - Sort Code: 30-90-15
 - Account number: 00170918
- Email: chairman@Holybourne.com